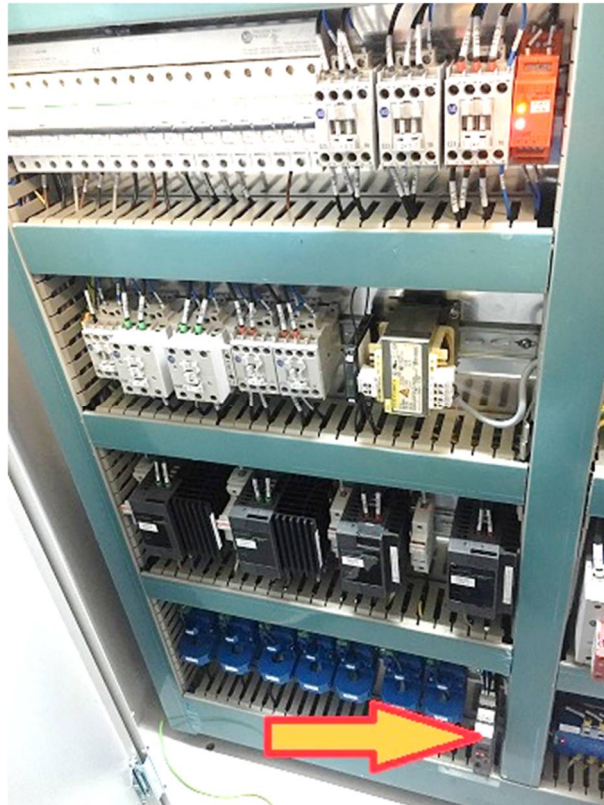


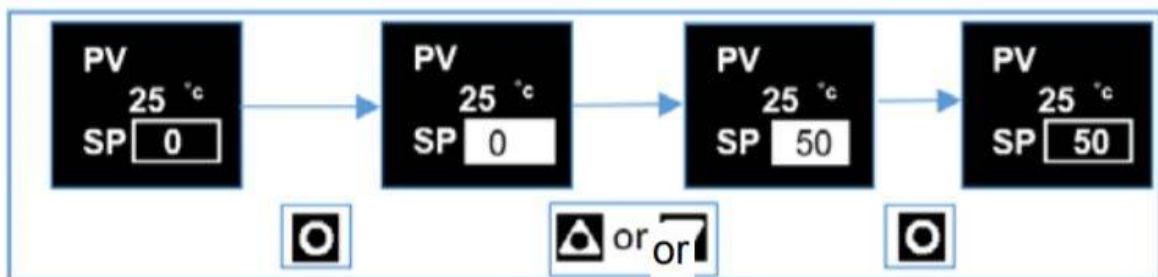
To alter the diffusion pump operating temperature.

The diffusion pump consumes 7.5w of electricity when operating normally. Wordentec WAVE systems are now equipped with a diffusion pump power saving feature. Depending on application, It is possible to reduce the power consumption by setting a lower pump operating temperature. When the diffusion pump temperature is exceeded, the power is switched off and the pump allowed to cool for a while. This can be done without altering the efficiency of the pump.

- 1) Find the diffusion pump temperature controller. It's a small rail mounted component located in the bottom of the electrical distributor.



- 2) Press the button, set the temperature using the buttons. Press to confirm



- 3) The diffusion pump operating temperature should be between 100°C and 140°C