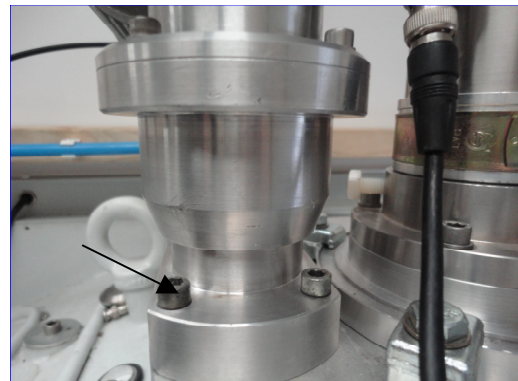


Rotary Drive Feedthrough Service Exchange

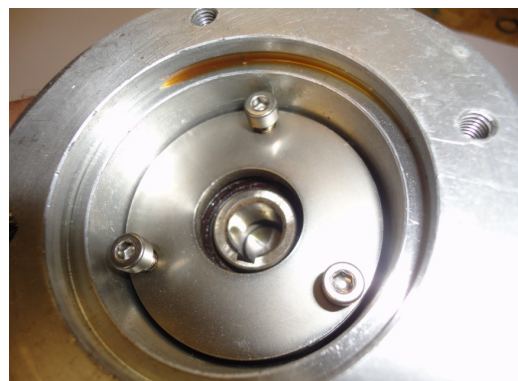
- 1) Vent the chamber and open the chamber door. Ensure that the manual override is switched off and the substrate carrier is not rotating.
Locate the rotary drive motor connection and unplug



- 2) Remove the four screws that hold the feedthrough assembly to the rotary drive. Pull the Assembly up and remove it from the system. Make a note of the orientation of the motor to the feedthrough. Undo the 4 screws that attach the motor to the feedthrough and separate.



- 3) Remove the three screws that hold the top of the one way clutch assembly into the main clutch body. Then remove the top of the clutch top plate. You may need to turn it upside down and gently tap it on the table to separate.



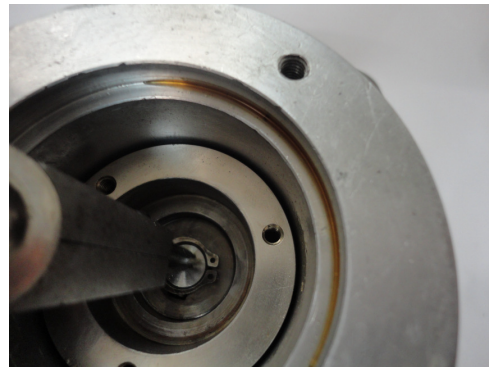
- 4) The one way clutch should slide out of the clutch housing, again inverting the assembly and tapping the face is all that's required to release the clutch..

IMPORTANT NOTE

The clutch must go back the same way up you may want to mark the top



- 5) Using some circlip pliers remove the circlip that holds the clutch housing to the feedthrough. Then remove the clutch housing body itself.
- 6) Using the circlip pliers remove the circlip holding the drive gear in place and remove the drive gear.



- 7) Reassembly is in the reverse order.

All of the parts should push together easily, it may be necessary to remove coatings, small burrs and imperfections from the keyways and shafts to ensure a good sliding fit.

